

Stepping Motor

LPD10-095



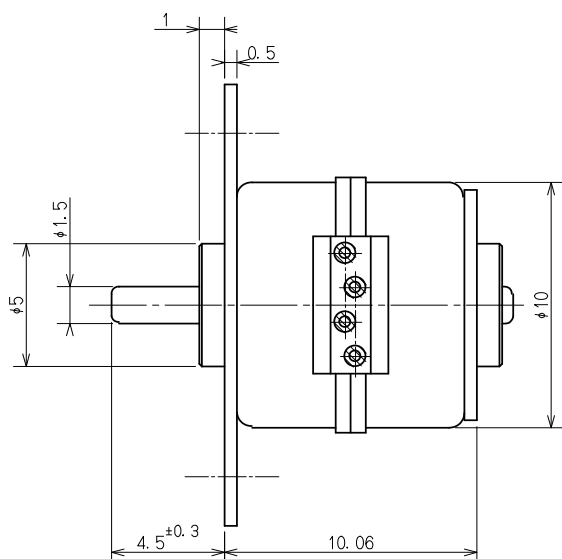
■ Features

- ✓ Mini-sized, lightweight
- ✓ High-accurate, quick response
- ✓ High torque

■ Specifications(TYP.)

Model	Unit	LPD10-055
Terminal Resistance	[Ω]	20
Rated Voltage	[V]	5
Step Angle (2 Phase)	[$^{\circ}$]	18
Maximum Starting Pulse Rate	[pps]	1400 (at 2 Phase)
Maximum Slewing Pulse Rate	[pps]	2300 (at 2 Phase)
Holding Torque	[mN·m]	1.8
Pull-in Torque (at 500pps)	[mN·m]	0.7 (at 2 Phase)
Pull-out Torque (at 500pps)	[mN·m]	1.0 (at 2 Phase)

■ Dimensions



■ F-T Curve

